

The Leadline



www.natrcregion1.org

The Voice of NATRC Region One Competitive Trail Riding

Fall/Winter 2010

In This Issue....

National Board Meeting Report.....	2
Summary of Rule Changes.....	3
National News Tidbits.....	3
NATRC Approves Dues Increase.....	4
Region 1 Board Vacancies.....	4
A Note of Appreciation.....	4
Award Sponsors Needed.....	5
Region 1 Convention Information.....	6
Region 1 Convention Registration.....	7
National Convention Schedule.....	8
National Convention Registration.....	9
Chi.....	10
Ride Results.....	11
Point Standings.....	13
Ride Schedule.....	14
The Bald Mountain Butt Buster.....	15
Membership Form.....	17

TAIL WINDS

It has been my honor and pleasure to serve as your Region 1 Chairman for the past three years. Time flies and there will be a new Chairman next year. Since this is my last column, I would like to thank all those unpaid volunteers who have served on the BOD during my tenure as Chair. Without them the region business could not have been conducted.

The farther we get away from those times in the 1800's, when horses were still required for labor and transportation purposes (as well as for war), the more they become a distant memory of how valuable and necessary they were. It has become very difficult to preserve places to keep them and trails to ride them with the huge increase in human population and the dwellings that house them. It takes special people who, for some reason, have been exposed to and bonded with horses to make the necessary effort to preserve and work with them.

NATRC (and some other horse disciplines as well) has such people, but it's getting tougher all the time to keep the status quo. The recent economic situation, including greatly increased prices for fuel, have made it more difficult for riders and volunteers to attend rides. Without sufficient riders, ride managers can't make ends meet much less make a profit or afford nice awards. The end result is fewer rides.

Another cause contributing to the reduction in rides is the fact that more and more State and county parks are charging unreasonable fees and adding restrictions that make it more expensive to conduct rides.

The passing of time has also thinned the ranks of those who were instrumental in getting NATRC started. Many others, who got involved later, have fought the good fight for a long time and need to be relieved by younger, more energetic converts.

As always, the future of any enterprise rests in the hands of the young. However, the younger grown-ups need to step up in the meantime to maintain something for the young to inherit. My sincere wish is that those of you who love horses and want to preserve NATRC contact your Region 1 Board and ask to have your names placed in nomination for the upcoming election. While the ride situation may seem grim at the time, fresh, energetic members with new ideas can go a long way toward preserving what we have until conditions get better. Then, maybe our wonderful sport, and Region 1 in particular, can manage to shift gears and return to the vibrant and enthusiastic organization it once was! Riders should make every possible effort to not only attend all the rides but get new people to attend as well.

On another note, I hope you will all support our 2011 Mini-Convention, to be held on March 12 in Livermore. I can say with confidence that Linda Thomason, the Convention Chair, will put together a great day filled with both fun and education. You will find more information elsewhere in this issue.

Best wishes to all for a merry Christmas and a productive New Year.

Phil Young, Chairman

Region One Board of Directors**Chairman:**

Phil Young
(530) 283-3221 pbyoung@sunset.net

Board Treasurer & Alt. Nat'l BOD:

Jim Ferris
(530) 432-6513 jcferris@sbbmail.com

Recording Secretary:

Stephanie Swain
(707) 528-2775 stephswain@earthlink.net

Corresponding Secretary:

Linda Thomason
(510) 651-9470 linda.thomason@comcast.net

National BOD Rep.:

Jamie Dieterich
(530) 836-1075 jamiek@gotsky.com

National BOD Rep.:

Sue Flagg
(925) 890-2144 iluvmulestoo@yahoo.com

Regional Board Member:

Linda Thomason
(510) 651-9470 linda.thomason@comcast.net

Regional Board Member:

Gene Boicelli
(925) 672-649 geneboicelli@aircloud.net

Regional Board Member:

Steve Meroshnekoff
(707) 743-9973 iambrewing@aol.com

Regional Board Member:

Angie Meroshnekoff
(707) 743-9973 awhitedog@aol.com

Committees**Region One Points & Membership**

Jim Ferris
(530) 432-6513 jcferris@sbbmail.com

Wonder Worker Recruitment

Steve Meroshnekoff
(707) 743-9973 iambrewing@aol.com

The Leadline Editor

Laurie Knuutila
(907) 378-9190 wildroseph@yahoo.com

Publicity / Outreach

Linda Thomason
(510) 651-9470 linda.thomason@comcast.net

Ride/Clinic Coordinator

Jamie Dieterich
(530) 836-1075 jamiek@gotsky.com

Historian

Kathy Nixon
(530) 283-9336 catnixon@juno.com

Trails Advocacy Rep.

Judy Etheridge
(925) 862-0232 misxfire@yahoo.com

National NATRC Exec. Administrator

Laurie DiNatale
(303) 688-1677 natrc@natrc.org

Hoof Print Editor

Cristy Cumberworth
(505) 325-8845 Natrchoofofprint@gmail.com

NATRC Home Page: www.NATRC.org
CTR Listserve info: jcferris@sbbmail.com

**See Hoof Print for National Board,
Committees, and Secretaries**

National Board of Directors Meeting Report

The National BOD Meeting was held in Denver, CO November 12-13, 2010.

Business of NATRC: Elaine Swiss, R4, has been running parallel accounting in QuickBooks with that of Treasurer, Connie Driskell, in Peachtree in preparation for a conversion which is nearly complete. Rides, ridership, and membership were all down for the year, and those all contributed to an anticipated shortfall of \$12-16,000 for 2010. Ways to cut expenses in several areas were discussed. Region 1's goals to help increase revenues for 2011 include increasing our number of rides (6 in 2010) by 10% and increasing the average number of riders per ride (24 in 2010). See separate report on upcoming dues changes.

Judges Committee: I met with other members of the judges committee November 12 to review horsemanship scorecards for rides in 2010. Comments are summarized and (hopefully) helpful feedback is sent to the respective judges. One of the main things we're trying to do is to encourage horsemanship judges to be more informative in their comments on the scorecards. If you have particular suggestions or concerns, please let me know.

Marketing: The committee has been directing most of their efforts toward recognizing the 50th anniversary in 2011. We have been getting free publicity in several publications and websites from articles that members have submitted. Visibility has been increased by such things as posting our ride schedule on the *Best of America by Horseback* and listing NATRC in the *Western Horseman* website directory. Please show your support for our national sponsors by buying from them and telling them "thanks" for being a sponsor of NATRC. See links to their web sites on the R1 web site.

Rule Changes: Several important rule changes were passed. See separate report.

Drug Rule: See separate report.

Proposed bylaws changes: Unfortunately the ballot that was distributed in the Autumn Hoof Print for the proposed bylaws changes was printed incorrectly: it was missing signature and mailing instructions. Therefore, to ensure there are no questions on improper procedure, the vote will have to be done over, and the ballot will be in the next regular Hoof Print. **YOUR OPINION MATTERS! PLEASE VOTE – AGAIN.**

Rules Interpreter Committee: It has become increasingly apparent that the Rules Interpreter position is very important. We'll have a short seminar on being a Rules Interpreter at our 2011 mini-convention.

2011 National Convention will be held in Nashville, TN on February 10-13. An excellent slate of speakers is lined up. In addition, a "Walk of Fame" will celebrate past winners. Plan to go help celebrate NATRC's 50th anniversary.

Respectfully submitted,
Jamie Dieterich



Summary of Rule Changes for 2011

Several rule changes will be in effect for 2011. Be sure to see the 2011 Rule Book. The complete text will also be posted on www.natrc.org.

1. All participants, personnel and equine owners will sign an NATRC liability waiver.

This has been in the Rule Book for clinics, but not for rides. We do it anyway, so it doesn't represent any real change.

2. Hoof boot rule.

Recent advancements in hoof boot design allow for a more effective and reliable fit. Specifically, straps, keepers, and gaiters that extend above the coronary band are now commonly used. The new rule will allow all types of hoof boots designed for sole protection. This means that hoof boots with keepers, gaiters, or straps will be allowed as long as they do not extend about the pastern. Trot-out exams should be conducted in what the horse does the ride in; i.e. if the horse wears boots for the ride, the trot-out exam should be done with boots. Judges may, and are encouraged to, check for rubs or chafes under any boot or their attachment.

3. Rides failing to meet minimum mileage criteria may be disallowed.

4. Horsemanship judges will be required to participate in the final examination of horses at the end of a ride.

5. Rules for National Championships in Region 1A have been changed to be more advantageous. Their Team awards will be figured like the rest of the

regions.

6. The Championship Challenge has been controversial and not financially lucrative. It has been deleted.

7. Awards. Questions concerning what the word "ride" means in the awards section; i.e. does it mean a ride regardless of type ("a ride is a ride") or does it mean ride according to type (AA = 3 days of riding, A = 2 days, B = 1 day). Wording in the awards section of the Rule Book has been expanded to clearly define the meaning of "ride" in each case. *No rules or procedures have been changed.*

8. Drug Rule. A comprehensive drug rule, patterned after and with the help and permission of AERC, was adopted. *"The purpose of this rule ... in equines during NATRC rides is both to protect the equines from harm and to ensure fair competition. Equines should compete under their natural abilities without the influence of any drug, medication or veterinary treatment."* A new section in the Rule Book, Prohibited Substances and Treatments, will be devoted to stating the rule. Detailed appendices listing prohibited substances, categories of prohibited substances, allowed substances, threshold levels, detection times, prohibited treatments, and allowed treatments will be posted on the NATRC web site and updated yearly. These appendices are very similar to, **but are not exactly the same as AERC's.** This new rule should be helpful to both riders and veterinarians, and ultimately should benefit the horse by making things very clear.

NATRC Student Loan Program

Student loans are available up to \$5,000 per person /year, at the discretion of the NATRC National Board of Directors, after proper application has been submitted. Preference will be given to a full-time student who has been a member of NATRC or whose family has been an active member for at least three years. Consideration will also be given to a student or a student's family who has been an active member of NATRC for less than three years but more than six months.

A loan will be made based upon financial need, scholastic achievement, and character of the applicant as determined by the Student Loan/Scholarship Committee.

A loan is to be repaid in monthly installments, with an annual interest rate of 3% charged on that loan, beginning not later than six months following graduation or when the recipient ceases to be a full-time student.

For an *application*, contact the NATRC Executive Administrator at natrc@natrc.org. Please complete the form in Word and submit via email to the NATRC Executive Administrator at natrc@natrc.org.

Good Search - Pennys for NATRC

GoodSearch.com is a new search engine that donates half its revenue, about a penny per search, to the charities its users designate. You use it just as you would any search engine, and it's powered by Yahoo!

Just go to GoodSearch.com and be sure to enter NATRC as the charity you want to support. Just 500 of us searching four times a day will raise about \$7,300 in a year without anyone spending a dime! And, be sure to spread the word!

Also, GoodSearch has a toolbar which you may download and install on your browser. It is a clean, useful toolbar which makes it easy to use GoodSearch and with NATRC as your charity selection for Internet searches.

National Tidbits

E-News and Website

NATRC has a commercial subscriber-based mass email marketing system to send news to different groups within NATRC. You can sign up by using the "Subscribe (NATRC E-News)" on www.natrc.org.

Our new site has gone "live"! It has been designed so that it will open on the "Newbie's" pages for anyone who does a search on such words as competitive trail riding, NATRC, trail riding, etc. Most likely, someone doing a search is new to NATRC so these pages will draw in potential new members and encourage them to learn more about us.

Existing members can click on the MEMBERS button at the bottom of the menu on the left of the opening page. This will take you to the Members home page. When you are on the Members page, just add it to your favorites so that for subsequent visits you can go directly to the members pages without going through the newbies' pages.

New Mission Statement

The following mission statement was adopted at the November National Board of Directors meeting:

"The North American Trail Ride Conference (NATRC) promotes horsemanship and horse care as they apply to the sport of distance riding by offering a variety of challenging and educational experiences designed to strengthen horse and rider partnerships."

NATRC Approves Dues Increase

Fifty years - what a tremendous milestone for our organization. Founded in 1961, NATRC has weathered the ups and downs of our national economy and has remained an institution dedicated to promoting long distance competitive trail riding across the country. Today our National organization provides its members with a variety of services, including:

- National and Regional Recognition
- Programs (Awards)
- Mileage Database (Horse and Rider)
- Automatic Regional Membership
- Competition Administration
 - Sanctioning
 - Rule Book
 - Scorecards
 - Drug Testing
 - Management Manual
 - Judge's Manual
- Platinum Insurance Program (extra fee)
- Hoof Print Newsletter

- Educational Materials
 - Websites
 - Rider's Manual
- Trail Grants
- Clinic Assistance
- Sponsor Discounts
- Scholarships
- Student Loans
- NATRC E-News
- Advertising Opportunities

Like all non-profit organizations, NATRC struggles to minimize its operating expenses in the face of ever-increasing costs for basics such as postage, software, liability insurance and internet access. Coupled with increased costs of services such as printing, it has become impossible to make ends meet in light of lower membership and ridership revenues.

As a result, after much analysis and discussion, for the first time since 1998, your National Board of Directors has approved an increase in the dues for NATRC

membership as a necessary means to increase revenues. Effective March 1, 2011, all dues will increase. Single membership will be \$60 per year, Family membership will be \$90 and Junior membership will be \$40. New lifetime memberships will no longer be offered other than those awarded as Honorary Lifetime members. Benefits for lifetime memberships previously purchased will not change. The amount submitted by National to the individual regions will remain the same.

New members who join and members who renew before March 1, 2011 for the 2011 year will pay our current lower rates. Every member is important to NATRC, and your Board is confident that our organization will ultimately be celebrating 100 years of competitive trail riding.

Elaine Swiss, R4
NATRC Treasurer, 2011

Region 1 Board of Directors Vacancies

Tis the season to be a jolly good Board Member!!

Actually, Christmas is over. However, our upcoming Region 1 Convention in Livermore is where current Region 1 members get to vote to fill the two Region 1 Board seats that become available each year. Ordinarily, anyone wishing to be nominated to run for one of those 3-year seats needs to

submit a short résumé to the R1 Recording Secretary (Stephanie Swain) prior to January 1 so it can be printed on the ballot, which will be distributed at the Convention. Our normal request for candidates is included in the pre-convention Leadline. Because that issue was delayed until January in order to include all the latest information, be after the holidays and closer to the Convention, the deadline for submitting résumés will be extended until January 31. Stephanie's contact information is in the Roster and in this issue.

The health of our organization requires the regular addition of new faces to the BOD to get new energy and ideas. If you would like to give back to our sport and could consider devoting some time and energy to participating in its management (there are only 4 regular meetings each year), please consider submitting your résumé for consideration. Santa will put you on his good list for next year!!

Phil Young



Photo by Kaylene Johnson

Riders on the trail at the
Bald Mountain Ride, Alaska

A Note of Appreciation from Kay Lieberknecht

People were so wonderful in how they handled the sudden death of Mike Tracy's horse just over two miles from the finish of the Harvey Bear ride. Riders got needed help or stayed with Mike, and Doug, Mike's local friend, came by at camp and gave him great support. The park rangers were professional, generous and comforting in their manner as they helped Mike prepare to take his horse's body back home, as he wished. The vet for the ride, Carol, was sensitive, clear and thorough in her explanations, offering reassurance that when an older horse dies suddenly and their gums are white it is almost certainly a rupture of an aneurysm (weakness) in the aorta as it goes through the abdomen.

At the second P&R, I was touched by Mike's affection toward his horse, watching him kiss him on the eyelid as his pulse was being checked. I had joked that the pulse would have been 12 instead of 10 if Mike hadn't given those two distracting kisses. I'm so glad I got to notice their love

Isn't it the case that when death takes someone we love it seems they weren't quite at the finish line?

Award Sponsors Needed!

Year-End awards are just around the corner with the 2011 Region 1 Convention in Livermore coming up. Please consider supporting your region by sponsoring an Award. Your donations help R1 to continue giving high quality Year-End awards.

Classes available for sponsorship are: Open HWT, Open LWT, Open JR, Novice HWT, Novice LWT, Novice JR & Competitive Pleasure.

The cost of sponsoring an award is:

- ❖ \$100 for a First place Horse or Horsemanship for each of the 7 classes (a total of 14 awards). These awards typically consist of a high quality blanket for the horse and a jacket for the rider,

or something equivalent.

- ❖ \$50 per class for ribbons, Horse or Horsemanship. A total of 14 ribbon sets.
- ❖ \$65 for a Special Memorial award. These include: Bob Smith perpetual award (High Point First Year Novice/CP horse); Fran & Carol Duport Memorial award (High Point First Year Open horse); Pat Ersepke Memorial Award (High Point Novice Horse/Rider Combination); and the Max Barmettler Region 1 Lifetime award (Outstanding service to Region 1).

Any other donations in the amount of your choice will, of course, be gratefully accepted. You might even consider getting together with someone to sponsor a class or memorial award together. Contact Kathy Nixon at 530-283-9336 for more information or to reserve a particular award. Mail your donations, specifying your first and second choice of awards that you wish to sponsor to: Kathy Nixon, 1160 La Porte Road, Quincy, CA 95971.

Thank you in advance for your support of Region 1.

Specialized Saddle Raffle

In honor of our 50th Anniversary, Specialized Saddles has generously partnered with NATRC on a Trailmaster model Specialized Saddle to raffle as a fundraiser throughout this year long celebration of our sport. The Trailmaster is a \$1549 value and can be further customized by the winner to suit his or her individual tastes. And that winner could be you!

Each region has the challenge to sell 400 tickets at rides or at any other regional NATRC event. Take the tickets to sell at endurance rides or pleasure rides or to 4-H or breed clubs to which you may belong. Specialized Saddles are versatile and attractive to all riders of all disciplines, so reach out beyond NATRC to your horse friends and family who will want a chance to win too.

The tickets are \$5 each or 5 tickets for \$20 when sold/bought directly from an individual. Region contacts are listed below. The tickets are also available on the national website, www.natrc.org, selling through PayPal for a price of 5 tickets for \$21 dollars. Our goal is to raise \$10,000 after covering the approx. \$1000 expenses.

The drawing will be at the 50th Anniversary National Convention on February 12, 2011 in Nashville, TN. Need not be present to win. Have fun!!

Contact Linda Thomason at linda.thomason@comcast.net or one of your Region 1 BOD members.



**NORTH AMERICAN TRAIL RIDE CONFERENCE
50TH ANNIVERSARY
SPECIALIZED SADDLE RAFFLE**

In honor of NATRC's 50th year, Specialized Saddles has generously donated one of their Trailmaster model saddles for a raffle benefitting our competitive trail community. The Trailmaster, a \$1,549 value, can be further customized by the winner to suit his or her individual tastes.

**Tickets \$5 each or 5 for \$20
Drawing on Saturday, February 12 2011
Need not be present to win.**

Follow the Ribbons to the Livermore Wine Country for the 2011 NATRC Region 1 Convention

The 2011 Region One NATRC convention will return to the Bothwell Art Center in Livermore Calif. on Saturday

March 12th. The Bothwell Art Center has had a "redo" in the past two years and the back acreage is now a lovely park. The center itself is repainted and spiffed up. These wonderful folks will again leave up their Mardi Gras decorations for our event, so we'll have "décor." As for the awards dinner, we welcome back "Black Tie Affair" who catered our dinner in 2008 and provided a true GOURMET experience. There will be a wine bar available during the dinner.

In the morning, water, coffee, tea and hot chocolate will be provided. We ask attendees to bring a breakfast "treat" to share. The coffee/breakfast gatherings are a great way to meet up with old friends and make new ones for 2011 as well as scout out the best items at the vendor tables! Lunch is available for a fee and will include: fruit, cookies, chips, drink and a sandwich. The sandwiches will not be pre-made as in the past. Instead you'll pick up your lunch bags with everything but the sandwiches and then design your personalized sandwich from trays of meats, cheeses and breads. Attendees are also asked to bring a raffle item or silent auction item. These can be personal donations or better yet, go out into your community and solicit clubs or merchants to donate items. **Donation forms are available. Most donations are tax deductible.** Please support your organization! You can make this the best event yet!!!

Everyone enjoys receiving awards but the cost of the awards is not totally covered by the Benefit Ride earnings. If you can, please consider donating to the awards program. Times are tough but if everyone helps just a little bit we can continue to have a great awards program. For award donations, contact Kathy Nixon (530) 283-9336.

We've lined up some great speakers and will again have vendors in the auditorium area. Healthy as a Horse Network has agreed to be one of our major vendors. They will be at AERC the week before and have agreed to stay over in California to attend our event. So save up those pennies and plan to have a fun and educational day as well as "shopping" for everything you'll need in 2011(as well as stuff you just can't pass up!!).

Registration forms are included in this Leadline and will soon be available online at the NATRC Region One Website. I would REALLY appreciate your help in advertising this event as there is something of interest for all equestrians, regardless of discipline.

Convention Speakers:



trail as long as possible.

Dr. Bill McKean: Dr. McKean is both a human and certified equine chiropractor whose practice is located in Folsom, Calif. He is an ex-Navy Seal and has extensive experience in sports injuries both as a therapist and patient. Dr. McKean has completed the Navy Seals Sports Pentathlon, Ironman and the 100 mile Tevis Cup endurance ride. He is an accomplished endurance rider who **completed** the Tevis Cup with an artificial hip and pins in his back. Dr. McKean will provide insights to keep horse and rider on the



pleased to have her back. Her specialty is internal medicine (infections and internal diseases). She is currently doing research at U.C. Davis on pigeon fever in California, and this will be her topic at the 2011 convention

Dr. Sharon Spier: Dr. Sharon Spier along with her husband Dr. Jack Snyder have been part of an international corps of veterinarians who have treated horses at international competitions since the 1988 Olympics. Dr. Spier is currently an associate professor of internal medicine at UC Davis Veterinary School. At the 2003 NATRC convention, Dr. Spier presented a behind-the-scenes look at setting up medical facilities for international competitions in less developed countries. With humor and great pictures, it was a memorable talk. She is a dynamic, engaging speaker, and we are

Alameda County Paramedic Group: This dynamic group of men and women are our "first responders" for emergency medical care. The women in this group are equestrians and will provide demonstrations addressing emergency trail medicine. Demos will include: how to use what's "available" to make splints, stop bleeding (human and horse), assess concussions etc. The Paramedic group will be driving one of the Alameda County Paramedic trucks to convention so you can see how it's set up and take a "tour".



Becky Hart: For the past 30 years Becky Hart has been endurance riding and has become one of the top competitors-not just in this country, but in the world. She's ridden more than 20,000 competitive miles en route to the Endurance Hall of Fame and twice won the Tevis Cup and the Race of Champions. She is the only rider to have won the prestigious World Endurance Championship three consecutive times. Her many accomplishments earned her the United States Equestrian of the Year title. She is also a Level 3 Centered Riding Instructor and for more than 20 years has taught at clinics and seminars across the country.

Becky was the US Endurance Chef d'Equipe at the World Equestrian Games in Kentucky this year. She will be providing a "behind the scenes" view of the Kentucky Games. Even if you went, this will be a new prospective from an insider and should provide lots of fun for those of us who couldn't attend. Please join me in a warm "welcome back" for Becky in 2011!!

So fellow equestrians, the lineup is GREAT, the venue is GREAT and the dinner will be GREAT! This "party" just needs attendees, so get out there and help advertise this event. The Livermore Wine country is a great place to spend the weekend. Plan ahead and make this your "get away weekend" before the ride season begins. As chairperson for the convention, I still need VOLUNTEERS- so don't be shy- get on board to help both before and during the event.

Don't forget to sign up early and take advantage of the "**Early Bird Discount.**" See you in March!





NATRC Region One Convention
March 12, 2011
Bothwell Art Center 2466 8th Street Livermore, Calif

Please Print :

Name: _____ Phone: (____) _____

Address: _____

City _____ State: _____ Zip: _____

E-mail address _____
(please include e-mail address to save postage and be notified of future events)

Are you a current member of NATRC? Yes No

Breakfast & Break treats will be provided. Coffee, tea & hot chocolate will be available throughout the day.

Registration Fees: Adult () X \$40.00 = _____

Junior () X \$20.00 = _____

Lunch Saturday () X 6.00 = _____

(Lunch includes: fruit, cookies, chips drink and “sandwich bar”(an assortment of cheeses and deli meats to create your own “Dagwood Delight”).

Early registration discount if postmarked by Feb. 28: Deduct () X \$5.00 =(____) Subtract

Awards Dinner Buffet

Dinner () X \$30.00 = _____

Catered by Black Tie Affair: (A gourmet dinner consisting of two main entrees, assorted vegetables, bread, salad and dessert. Not to be missed!)

Total Due = _____

Cancellation: **Refund of Registration Fees if received by Monday March 7**

****Note: Deadline for Lunch and Awards Dinner Signup is Monday 3/7/11****

Menu (Catering by A Black Tie Affair):

- Choice of Two main entrees (stuffed chicken breast with spinach/ricotta cheese or Beef Wellington) If you require a vegetarian entrée- please notify Linda Thomason.
- Green salad, bread & butter, Fruit platter
- Choice of multiple side dishes
- Soda, Water, Coffee and Tea
- Dessert: dessert tray with a mixed variety of individual dessert tarts
- There will an open wine bar during the awards dinner and presentation

Please make checks payable to: NATRC Region 1

Additional Information can also be obtained from:

Mail to: Betty Young
674 La Porte Rd
Quincy, Calif. 95971
e-mail: pbyoung@sunset.net

Linda Thomason
Convention Chairperson
(510) 651-9470
linda.thomason@comcast.net



NATRC NATIONAL CONVENTION

FEBRUARY 10 - 13, 2011 NASHVILLE, TN

"NATRC Gone Country"

Celebrating 50 Years of Competitive Trail Riding

Embassy Suites Nashville Airport

Presentation Schedule

Thursday, February 10

9:00 am Registration begins

2:00 Tour of Josh Lyon's Legacy Training Center Cross Plains, Tennessee (Working with Josh Lyons Event Coordinator about this. Not confirmed as yet and no \$ or bus charges available as yet. This is still a possibility.)

Friday, February 11

7:00 Registration begins

8:00-8:30 Opening Announcements (Welcome: Gary Clayton/ Kim Cowart) Motivational Address and Housekeeping Information: Marty Findley

8:30-9:45 "Moving Up" Dr. Ken Marcella, DVM, Proper conditioning and fitness techniques to prepare distance riders to move from pleasure riding to competitive trail, from Novice to Open Division in NATRC, and to recognize when your horse is ready to safely and efficiently move up to an increased level of performance.

9:45-10:00 Break; drawing for door prizes

10:00-11:15 "Inside a Colic Surgery" Dr. Jim Blackford will cover a colic surgery from diagnosis and triage to recovery and return to competition

11:15-12:00 "Meet the New Ride Management System" Janis Baldwin will be discussing the changes that will be made in the new and improved RMS system for NATRC.

12:00-1:00 Lunch

1:00-2:00 "Animal Communication" Linda Salinas. Have you ever said, "I wish my horse could talk to me?" Well, here is your opportunity to discover the world of animal communication. Linda Salinas will discuss how she became an animal communicator and her gift of hearing what her clients are saying to her.

2:00-2:45 "Everything You Ever Wanted to Know about Trailer Assistance (but were afraid to ask)" -US Rider Nationwide Trailering Assistance. This presentation will cover common trailer problems on the road and what you need to know to receive the proper assistance (i. e., wrecker has to be able to pull **both** your truck and trailer, where and how to safely secure your horses during an emergency)

2:45-3:00 Break

3:00-3:30 "Trailer Maintenance" Mike Davidson will discuss the proper ways to care for your trailer to insure safe and trouble-free (as possible) trailering with your horses.

3:30-5:00 "Let's Learn To Line Dance" What's a trip to Nashville, the Country Music Capital of the World, without a line-dancing

lesson or two? Debbie Clark will lead this fun learning experience.

5:00-6:30 Break/Hospitality Suite

6:30-8:00 Dinner

8:00-???? Country/Line Dance Band

Saturday, February 12

7:00 Registration begins

7:00-8:00 Judges Meeting (Probably in the Georgia Room)

8:00-8:15 Brief welcome for those arriving for the first time.

8:15-9:15 "Equine Chiropractic" Dr. Troy Nelson (a distance rider himself) will explain how an equine chiropractor can enhance your level of participation in distance riding. Dr. Nelson will take us through an adjustment and explain the process.

9:15-9:30 --Move outside to observe Dr. Nelson adjust a horse in the parking lot. (Tentative)

9:30-10:00 Dr. Nelson will be adjusting a horse, describe the process and answer questions.

10:15-10:30 Break

10:30-12:00 "Caring for Your Competitive Horse" Dr. Nancy Loving, DVM has been a dressage and event competitor, a NATRC vet judge, and a FEI-sanctioned veterinarian and team vet for the USEF national endurance squad as well as participating as an enthusiastic endurance rider. Her latest book is, *All Horse Systems Go: The Horse Owner's Gull-Color Veterinary Care and Conditioning Resource for Modern Performance, Sport and Pleasure Horses*.

12:00-1:30 Lunch

1:30-3:00 "Awaken the Spirit of the Horse within Yourself" Tony Stromberg will share his experiences as he left his corporate profession to travel to the west to begin his pilgrimage away from the frenetic world of advertising and into a world possessing a different respect for nature and the land... a world expansive enough to hold a deep-rooted meaning and purpose for both himself and his newly-discovered partner, the horse.

3:00-5:30 Hospitality Suite/Free Time

5:30-6:00 Meet and Greet/Happy Hour

6:00-???? Dinner, Silent Auction & Awards

Sunday, February 13

9:00 Region 5 Awards (breakfast on your own prior to awards)

NATRC 2011 NATIONAL CONVENTION

February 10—13 2011

“NATRC GONE COUNTRY”

Convention Registration Form
(one sheet per registrant)



Name: _____ e-mail: _____

Address: _____ State: _____ Zip: _____

Phone (home): _____ Phone(other): _____

Early Bird Special: **\$110**

Includes all speakers & Awards Dinner

Reservations must be postmarked by 12/31/2011

Family Discount

**10% off for
family of 3 or
more**

Late Fee: **\$25**

For Reservations postmarked after 12/31/2011

Cancellation Fee: **\$20**

For reservations cancelled by 1/25/11

NO SHOWS/NO REFUND!!!!

Logo T-Shirts:

Shirt size: *S* _____ *M* _____ *L* _____ *XL* _____
(larger sizes *XXL* _____ *XXXL* _____)
gold emblem

	Fee	Total
Early Bird Special <i>Includes all speakers and Saturday Awards Dinner (does not include Fri Dinner)</i>	\$110	_____
Family Discount (registration)	-10%	_____
NBOD Meeting — Thursday	Free	_____
Speakers—Friday Only	\$40	_____
Speakers —Saturday Only	\$40	_____
Speakers Only – Friday/Saturday	\$70	_____
Awards Banquet—Saturday Night	\$50	_____
Friday Dinner	\$30	_____
Late Fee - registration after 1/25/2011	\$25	_____
T-Shirt—short sleeved (S,M,L, XL)	\$20	_____
Larger Sizes (XXL, XXXL)	\$23	_____
TOTAL		_____

Embassy Suites—Nashville Airport
10 Century Blvd
Nashville, TN 37214
Phone Reservations: 1-615-871-

**Send registration and check payable
to: 50th Annual NATRC Convention
c/o Linda Clayton
6774 W Old Hayneville Rd.
Hope Hull, AL 36043
334-281-5509**

HOTEL RESERVATIONS

(make directly with the hotel using Group Name: NATRC)
Up to four persons per room

All Luxury Suites \$109 + Tax
Queen or King size bed
Rental Cars available
Free airport shuttle
Free hotel parking
Pet-friendly rooms available

Chi

(AKA
Chi-ster,
Chi-tah
Chi-cicle,
Her Royal Chi-ness,
My Little Chi-quita. . .)

by Kay Lieberknecht

Yesterday on Sage's birthday, the day before Thanksgiving, Kyle went to feed and saw that Chi, our Appaloosa Mustang pony mare, had dislocated her left shoulder, with her elbow sticking out at a horrifying angle. About five years ago that elbow had been injured and she'd had a tendency to get a little "off" at times. Maybe she'd slipped in the mud and aggravated the old injury . . . She didn't seem to be in pain, standing on three legs to eat her hay.

Kyle called me, I called the vet, and the truth was that there was no way Chi could ever use that leg again. Dr. Michelsen, Kyle, Kaysha, Ariel, Sage and Doris were joined by neighbors to take care of the situation while I stayed at my work with challenged kids.

Chi is buried, at age 13. The best little horse, safe and sweet with anyone, fun to ride, even for long-leggeds who could just about touch the ground when on her.

Chi was a yearling at an adoption where I was doing demonstration gentling. I chose to work with her because she appeared very skittish and I wanted to encourage someone to take a chance with her. Within an hour of being in the round pen with me she was letting me trim her

cute round feet. A woman adopted her – Yay!

Two or three years later the woman called me to trim her again. Yes, she was friendly, could be led. But she was in a big arena when I got there, and it turned out her owner figured I could lead her, once I caught her, which didn't happen within my time frame (two hours).

Before I came back they built a round pen and had her lured into it, even haltered. Chi kept rearing up and trying to whirl away from me as I held her leadrope. I'd pull her back down, and soon she'd do the same thing again.

Once I decided not to pull against her and, not getting the expected pressure, she fell down. I kept her neck pressed to the ground, and she relaxed! So, her owner did the job at the neck, and I trimmed her feet – still cute after years of no attention! When done, I asked her to get up and follow me nicely, and she was as if totally trained!

Over the next two years I trimmed her feet regularly, and then when her owner couldn't afford so many horses, I offered to train her without charge, just enough that someone would take her on.

Chi was still picky about "letting" anyone handle her – treats were her price. I don't do treats, but by not letting her eat her hay unless she was letting me touch her, she learned to be handled on my terms.

A local riding instructor adopted her, but it didn't work out. Because Chi didn't trust people, she would do undesirable things out of fear or resistance.

So I got Chi – for me! Wow, a cute little flecked grulla with dark legs and pink hooves, not enough hair to even grab, smooth and spare and balanced! We'd take all the time she needed to become trusting.

Good thing horses are itchy – and my nephew Jeremy who was living with me

liked picking ticks! Their symbiotic relationship, Jeremy positioned under Chi's udders to get the most ticks in one sitting, is what got Chi trusting people.

And what a great ride she turned out to be! Obedient, brave, unbelievably sure-footed!

The first time I had her canter I thought she was bucking, but it was some kind of deer-like *proiinngg-proiinngg-proiinngg*! Good thing she was only 850 pounds or her power would have been too much!

I only fell off her once (pretty good for me) – at her first NATRC ride, when our treeless saddle turned. She had no withers . . . After that I learned about cruppers. We called hers the "Chi-thong".

She took many kids on many wonderful rides, winning Region I First Place Novice Junior Horse one year – a soft gray blanket just her size. I rode her in some limited distance endurance rides, going into overdrive at the trot, switching leads at the canter. My favorite was being on foot running downhill in front of her, or tailing her – what a buddy.

Chi was an astonishingly safe horse for beginners. A very adventuresome girl with cerebral palsy, who could not hold her arms and head still, rode Chi all over the trails, even trotting. Chi entered a costume class as a duck, a flymask converted to a face with big eyes and a bill over her nose, a crazy tail held on by that vital crupper, wings, and floppy orange felt-and-wire feet . . . No problem when some body part fell off and was dragging behind her!

All the other horses loved Chi, sharing their food with her.

I have no difficulty thinking what to be grateful about, having had her in our lives as we experience this Thanksgiving without her.

THE LEADLINE is the official publication of Region One of the North American Trail Ride Conference (NATRC). The Leadline is published three times per year and mailed or emailed to all NATRC Region One members. It is available by subscription to non-Region One members at \$8 per year. Issues contain updated information from Region One committees, ride results, point standings, minutes of board meetings, and the current Region One ride schedule. Send subscription requests and payments (made out to NATRC Region One) to Laurie Knuutila, Editor, 455 Ream Lane, Fairbanks, Ak 99712. Email wildroseph7@yahoo.com. Contributions are welcome. NATRC Region One and The Leadline do not necessarily endorse or support the opinions expressed in printed articles or advertisements. The Editor reserves the right to edit material as necessary. No letters to the Editor will be printed if not signed. NATRC and the staff of The Leadline are not responsible for errors in spelling of horses' or riders' names.

Deadlines:

Spring issue – Submission: March 15; Publication: April 1
Summer issue – Submission: July 15; Publication: August 1
Winter issue – Submission: Nov 15; Publication: Dec 1

Advertising rates per issue:

Full page—\$40
Half page—\$20
Quarter page—\$10
Business card—\$5

Classified ads are free to Region One members in good standing, one per issue, up to 30 words. Ads may be emailed, or hard copies mailed to the Editor can be scanned as submitted. Send ads to the Editor and make checks payable to NATRC Region One.

Region 1 Ride Results

Results not official until published in Hoof Print

Bald Mountain Butt Buster A

7/17-18/2010 Region 1A-AK

A-O/CP Total Riders: 29

Chair: Diane Sullivan

Judges: Kay Gunckel DVM, Jim Ferris

Open Sweepstakes:

CR Splash of Magic/Hamlin, Ginger-91

Open Heavyweight

1/2 Indy's Midnight Sun/Hoffman, Angela

2/3 Damis Sahhar/Hedum, Emily

3/1 Abu Absorke Rafle/Douthit, Marilou

P Sadie 4/Flanders, Ann

P Allexxa Rae/Inglet, Christine

Open Lightweight

1/3 CR Splash of Magic/Hamlin, Ginger

2/1 Brisco/Stevenson, Brandy

3/4 Gypsy 7/Stevenson, Kelly

4/2 Monet Image/Yarborough Moore, Debra

5/5 Katla/Circle, Misty

6/6 Poncho 2/Faulkner, Jane

Open Junior

1/2 Luna/Mahler, Kaylee

2/3 Baha Rose/Kirsch, Katie

3/1 Cricket/Wilson, Kristin

CO Ruby 6/Myrvold, Shelby

P Alita-McCoy/Inglet, Lindsey

Competitive Pleasure

1/3 Wildwood Royal Twist/Dent, Susan

2/2 Willow Bey Star/Grogan, Brenda

3/1 Flash's Gentleman Jim/Forrester, Donna

4/ Mystery's Midnight Express/Carlson, Jessica

5/ Hunar/Talbot, Vickie

6/4 Sanalta's Sugar and Spice/Hamlin, Kiana

/5 Curly Sue/Hirsiger, Ruth

/6 Ginger 11/Elsberry, Dorothy

Amigo 2/Franco, Celeste

Sedonia/Drake, Brad

Sam 5/Bentti, Keith

P Quest Forelegance/Hamlin, Mikayla

Competitive Pleasure DO

Star of Excellence/Halley, Catherine



Photo by Kaylene Johnson

Horses at a P & R stop at the Bald Mtn. ride

Bald Mountain Butt Buster B

7/17/2010 Region 1A-AK

B-N Total Riders: 21

Chair: Diane Sullivan

Judges: Kay Gunckel DVM, Jim Ferris

Novice Sweepstakes:

Alaska's Ike/Sullivan, Bill-99

Novice Heavyweight

1/1 Alaska's Ike/Sullivan, Bill

2/2 Genuine Arctic Attitude/McDonough, Barbara

3/3 Tucker 4/Cupples, Jayme

4/6 Zahirah/Berg, Karen

5/4 Uni/Fornear, Danika

6/5 Manadis/Miller, Cynthia

CO Jazzmine/Benner, Lori

CO Gjof/Circle, Duke

Novice Lightweight

1/1 Bo 5/Schamber, Pam

2/2 Teddy 2/Luther, Cindy

3/3 Primo/Berg, Ginny

CO Polstjarni/Barnard, Suzanne

CO Henry 2/Kirsch, Tammy

P Raudhetta/Culhane, Alys

P Dakota 12/Jensen, Jean

P Demi/Mearkle, Lindsay

Novice Junior

1/1 Pistol 2/Lorence, Kelti

2/2 Shorty 3/McCoy, Mariah

P Holy Itchabull/Wagner, Paige

Novice DO

Sweet Whiskey Sour/Daugherty, Joanne

P Calypso Orchid/Covel, Kathy



Photo by Kaylene Johnson

Jamie Cupples and Tucker splash through the Little Susitna River during the Bald Mtn. ride

Jackson Forest A

8/21-22/2010 Region One-CA

A-O/N/CP Total Riders: 17

Chairman: Steve Meroshnekoff

Judges: Greg Fellers DVM, Karel Waugh

Novice Sweepstakes:

Tango Sierra/Harvey, Laura-96

Open Sweepstakes:

Desert Reinbeau/Meroshnekoff, Angie-98.5

Open Heavyweight

1/2 Stealth Knight/Boicelli, Victoria

2/1 Pchelkas Starr/Boicelli, Gene

CO Honeymoon Night

Lily/Lewandowsky, Kathryn

Open Lightweight

1/1 Desert Reinbeau/Meroshnekoff, Angie

2/2 Marilyn/Pimentel, Michelle

Open Junior

1/1 Cookie 4/Schlerf, Haley

Open DO

Jamal BL/Upton, Linda

Novice Heavyweight

1/1 Tango Sierra/Harvey, Laura

Novice Lightweight

1/1 Sierra Sunshine/Stidolph, Donna

Competitive Pleasure

1/4 The Sundance Kid HGR/Kasovich, Nancy

2/ Tilly 2/Brault, Josette

3/2 OM El Shakeeb Dream/Dillard, Joe

4/3 Rafaelmo Bey/Skoog, Kris

5/6 Virga BL/Dillard, Ashley

6/ Royal Prancer/Pimentel, Joe

/5 MJ Abiad Amir/Ferris, Jim

/1 Bellinzona Gold/Coe, Deborah



Photo by Kaylene Johnson

Horseman judge Jim Ferris and his secretary watch horses and riders at the Bald Mtn. Ride

Region 1 Ride Results

Results not official until published in Hoof Print

Jackson Forest B

8/21/2010 Region One-CA

B-N Total Riders: 10

Chairman: Steve Meroshnekoff

Judges: Greg Fellers DVM, Karel Waugh

Novice Sweepstakes:

Hank 7/Armstrong, Olivia

Novice Heavyweight

1/4 GLF All Keyed Up/Upton, Robert

2/3 Garnet/Kirchgasler, Daniel

3/1 Laarkin/Brown, Tammy

4/2 Jezebel 2/Wolf, Sage

Novice Lightweight

1/1 Helvetias Prince/Haas, Cliveden

2/2 Rafiki Bey/Lauenstein, Susan

Novice Junior

1/DO Hank 7/Armstrong, Olivia

2/2 Chi/Isgrigg, Kayshe

3/1 My Gal Sal/Johnson, Karlie

Novice DO

Jazz 4/Brown, Doug

Region One Benefit/Oakland Hills A

9/18-19/10 Region One-CA

A-O/N/CP Total Riders: 13

Chair: Sue Flagg/Michelle Pimental

Judges: Carol Ormond DVM, Jim Ferris

Open Sweepstakes:

Kamiko/Thurman, Ariel-98

Novice Sweepstakes:

My Gal Sal/Johnson, Karlie-90.5

Open Heavyweight

P Pchelkas Starr/Boicelli, Gene

P Stealth Knight/Boicelli, Victoria

Open Lightweight

1/1 Desert Reinbeau/Meroshnekoff, Angie

Open Junior

1/2 Kamiko/Thurman, Ariel

2/1 Lady Tigers HySyn/Schlerf, Haley

Open DO

DMS Apple Jack/Mullens, Damara

Novice Heavyweight

1/1 Tango Sierra/Harvey, Laura

Novice Lightweight

P Sierra Sunshine/Stidolph, Donna

Novice Junior

1/1 My Gal Sal/Johnson, Karlie

Competitive Pleasure

1/2 OM EL Shakeeb Dream/Dillard, Joe

2/3 Virga BL/Dillard, Ashley

3/4 Bellinzona Gold/Coe, Deborah

4/1 Rafaelmo Bey/Skoog, Kris

Region One Benefit/Oakland Hills B

9/18/10 Region One-CA

B-N Total Riders: 8

Chair: Sue Flagg/Michelle Pimental

Judges: Carol Ormond DVM, Jim Ferris

Novice Sweepstakes:

Fames Baydal BL/Fitts, Gary-98.5

Novice Heavyweight

1/2 Fames Baydal BL/Fitts, Gary

2/4 Cabo/Holz, Mia

3/1 Valentyne/Jones, Kyle

4/3 Smoky/Berlitz, Barbara

Novice Lightweight

1/1 Breeze 2/Feigenbutz, Christy

2/DO TA Mira-Image/Swain, Stephanie

Novice Junior

1/2 Tosca BL/Whittall, Zoe

2/1 Marilyn/Saudan, Tina

Round Valley

10/2/10 Region 1 – CA

B - O/N/CP Total riders – 20

Chairman: Gene Boicelli

Judges:

Carol Meschter, DVM, Jamie Dieterich

Open Sweepstakes:

Kamiko/Ariel Thurman

Novice Sweepstakes:

Tosca BL/Zoe Whittall

Open Heavyweight

1/1 Marilyn/Joe Pimentel

Open Lightweight

1/1 Desert Reinbeau/Angie Meroshnekoff

2/2 Royal Prancer/Michelle Pimentel

Open Junior

1/1 Kamiko/Ariel Thurman

Novice Heavyweight

1/1 Fames Baydal BL/Gary Fitts

CO Smoky/Barbara Berlitz

CO Valentyne/Kyle Jones

CO Tango Sierra/Laura Harvey

CO Sarafina/Maria Pilgrim

Novice Lightweight

1/1 Azzana BL/Elisabeth Chemouni

DO TA Mira-Image/Stephanie Swain

Novice Junior

1/1 Tosca BL/Zoe Whittall

CO Chi/Kaysha Isgrigg

CO My Gal Sal/Karli Johnson

Competitive Pleasure

1/4 OM El Shakeebs Dream/Joe Dillard

2/2 Rafaelmo Bey/Kris Skoog

3/1 Bellinzona Gold/Deborah Coe

4/3 Virga BL/Ashley Dillard

5/5 Tilly/Josette Brault

6/6 Turalura/Linda Cannon

Harvey Bear Ranch

10/10/2010 Region One-CA

B-O/N/CP Total Riders: 22

Chairperson: Chere Bargar

Judges:

Carol Meschter DVM, Karel Waugh

Open Sweepstakes:

Desert Reinbeau/Meroshnekoff, Angie-98

Novice Sweepstakes:

Garnet/Kirchgasler, Daniel-95

Open Heavyweight

1/1 Stealth Knight/Boicelli, Victoria

2/2 Pchelkas Starr/Boicelli, Gene

Open Lightweight

1/1 Desert Reinbeau/Meroshnekoff, Angie

Open Junior

1/1 Kamiko/Thurman, Ariel

2/2 Lady Tigers Hysyn/Schlerf, Haley

Open DO

Marilyn/Grubb, Kaitlen

Royal Prancer/Pimentel, Michelle

Novice Heavyweight

1/2 Garnet/Kirchgasler, Daniel

2/1 Laarkin/Brown, Tammy

3/3 Valentyne/Jones, Kyle

4/4 Tango Sierra/Harvey, Laura

P Aron Moon/Tracy, Mike

Novice Lightweight

1/1 Sierra Sunshine/Stidolph, Donna

2/3 Raven 3/Davis, Brenda

3/DO TA Mira-Image/Swain, Stephanie

4/2 Renno/Ballard, Tanya

Novice Junior

1/2 Chi/Isgrigg, Kayshe

2/1 My Gal Sal/Johnson, Karlie

Competitive Pleasure

1/2 OM EL Shakeeb Dream/Dillard, Joe

2/3 Bellinzona Gold/Coe, Deborah

3/1 MJ Abiad Amir/Ferris, Jim

4/4 Virga BL/Dillard, Ashley

Region 1 Year End Point Standings

The results listed below are preliminary through 10/09/10. If you have any questions, please contact Jim Ferris at 530-432-6513 or jcferris@sbbmail.com.

Competitive Pleasure - Horse

PI	Horse / Breed	Rider	Pts	MIs	1 st Yr
1	OM El Shakeeb Dream / Arab	Dillard, Joe	49	160	
2	Virga BL / Arab	Dillard, Ashley	40	160	*
3	Bellinzona Gold / Othr	Coe, Deborah	23	120	*
3	Rafelmo Bey / Arab	Skoog, Kris	23	100	
5	Tilly / Grade	Brault, Josette	18	60	*
6	Royal Prancer / Pfin	Pimentel, Joe	15	80	
7	MJ Abiad Amir / Arab	Ferris, Jim	8	60	

Novice Heavyweight - Horse

PI	Horse / Breed	Rider	Pts	MIs	1 st Yr
1	Tango Sierra / M-FX	Harvey, Laura	32	160	
2	Fames Baydal BL / Arab	Fitts, Gary	23	60	
3	Garnet / Must	Kirchgasler, Daniel	19	60	
4	Laarkin / Arab	Brown, Tammy	15	60	*
5	Valentyne / Grade	Jones, Kyle	11	60	
6	Cabo / Arab	Holz, Mia	10	40	*

Novice Junior - Horse

PI	Horse / Breed	Rider	Pts	MIs	1 st Yr
1	My Gal Sal / Grade	Johnson, Karlie	16	100	*
2	Chi / Must	Isgrigg, Kaysha	12	80	

Novice Lightweight - Horse

PI	Horse / Breed	Rider	Pts	MIs	1 st Yr
1	Sierra Sunshine / Arab	Stidolph, Donna	18	80	*
2	Fadjrz / Arab	Pimentel, Michelle	11	40	*
2	Renno / Appy	Ballard, Tanya	11	40	
4	Helvitas Prince / Othr	Haas, Cliveden Chew	10	60	
5	TA Mira-Image / Arab	Swain, Stephanie	9	60	

Open Heavyweight - Horse

PI	Horse / Breed	Rider	Pts	MIs	1 st Yr
1	Stealth Knight / H-Ar	Boicelli, Vicki	14	90	*
2	Pchelkas Starr / Arab	Boicelli, Gene	11	90	*

Open Junior - Horse

PI	Horse / Breed	Rider	Pts	MIs	1 st Yr
1	Kami Ko / Grade	Thurman, Ariel	28	180	
2	Lady Tigers Hysyn / Grade	Schlerf, Haley	18	180	*

Open Lightweight - Horse

PI	Horse / Breed	Rider	Pts	MIs	1 st Yr
1	Desert Reinbeau / Must	Meroshnekoff, Angela	36	240	
2	Royal Prancer / Pfin	Pimentel, Joe	6	60	

Competitive Pleasure - Rider

PI	Rider	Pts	MIs
1	Dillard, Joe	48	160
2	Coe, Deborah	34	120
3	Dillard, Ashley	33	160
4	Skoog, Kris	31	100
5	Ferris, Jim	14	60
5	Pimentel, Joe	14	80
7	Brault, Josette	8	60

Novice Heavyweight - Rider

PI	Rider	Pts	MIs
1	Harvey, Laura	29	160
2	Fitts, Gary	20	60
3	Brown, Tammy	17	60
3	Kirchgasler, Daniel	17	60
5	Jones, Kyle	13	60
6	Holz, Mia	7	40

Novice Junior - Rider

PI	Rider	Pts	MIs
1	Johnson, Karlie	16	100
2	Isgrigg, Kaysha	10	80

Novice Lightweight - Rider

PI	Rider	Pts	MIs
1	Stidolph, Donna	17	80
2	Haas, Cliveden Chew	11	60
3	Pimentel, Michelle	9	40
4	Ballard, Tanya	8	40

Open Heavyweight - Rider

PI	Rider	Pts	MIs
1	Boicelli, Gene	13	90
2	Boicelli, Vicki	12	90

Open Junior - Rider

PI	Rider	Pts	MIs
1	Schlerf, Haley	22	180
2	Thurman, Ariel	20	180

Open Lightweight - Rider

PI	Rider	Pts	MIs
1	Meroshnekoff, Angela	29	240
2	Pimentel, Michelle	9	90

Competitive Pleasure - Combined

PI	Horse / Breed	Rider	Pts
1	OM El Shakeeb Dream / Arab	Dillard, Joe	97
2	Virga BL / Arab	Dillard, Ashley	73
3	Bellinzona Gold / Othr	Coe, Deborah	57
4	Rafelmo Bey / Arab	Skoog, Kris	54
5	Royal Prancer / Pfin	Pimentel, Joe	29

Novice Heavyweight - Combined

PI	Horse / Breed	Rider	Pts
1	Tango Sierra / M-FX	Harvey, Laura	61
2	Fames Baydal BL / Arab	Fitts, Gary	43
3	Garnet / Must	Kirchgasler, Daniel	36
4	Laarkin / Arab	Brown, Tammy	32
5	Valentyne / Grade	Jones, Kyle	24

Novice Junior - Combined

PI	Horse / Breed	Rider	Pts
1	My Gal Sal / Grade	Johnson, Karlie	32
2	Chi / Must	Isgrigg, Kaysha	22

Novice Lightweight - Combined

PI	Horse / Breed	Rider	Pts
1	Sierra Sunshine / Arab	Stidolph, Donna	35
2	Helvitas Prince / Othr	Haas, Cliveden Chew	21

Open Junior - Combined

PI	Horse / Breed	Rider	Pts
1	Kami Ko / Grade	Thurman, Ariel	48
2	Lady Tigers Hysyn / Grade	Schlerf, Haley	40

Open Lightweight - Combined

PI	Horse / Breed	Rider	Pts
1	Desert Reinbeau / Must	Meroshnekoff, Angela	65

2011 Ride Schedule

May 7	Mt. Diablo Ellen Pofcher Sec: Laurie Page	Clayton, CA (925) 672-3733 (925) 672-3978	"B" O/N/CP mtnoaks@earthlink.net mtnoaks@earthlink.net
May 21 	Cowboy Camp Jean Armer Sec: Maria Pilgrim	Williams, CA (530) 755-8301 (707) 795-8163	"B" O/N/CP armer@citlink.net wolves1961@sbcglobal.net
June 4	Arnold Rim Robyn Berwick Sec: Chris Markus	Avery, CA (209) 534-0451 (209) 728-3148	"B" O/CP/N boonedoggle@att.net markuschris@hotmail.com
June 18-19	Round Valley Regional Park Gene Boicelli Sec: Linda Thomason	Brentwood, CA (925) 672-6491 (510) 651-9470	"A" O/CP; "B" N LIMIT: 45 geneboicelli@aircloud.net linda.thomason@comcast.net
July 16-17	Challenge of the North Laurie Knuutila Sec: Lezlie Wilfer	Fairbanks, AK (907) 378-9190 (907) 474-4631	"A" O/CP; "B" N wildroseph@ yahoo.com wilfer@acsalaska.net
July 23 (Pending Permits)	Hoof Trek Monterey Bay Barbara Berlitz Sec: Debbie Murphy	Fort Ord, CA (916) 719-6265	"A" O/N/CP; "B" N barbaraberlitz@yahoo.com equuspassage@aol.com
August 6 (Pending Permit)	Georgetown Helen Steenman Sec: Lucinda Elliott	Georgetown, CA (530) 333-4364 (530) 887-9785	"B" O/N/CP hsteenman@yahoo.com siselliot@att.net
Aug 20-21	Jackson Forest Steve Meroshnekoff Sec: Maria Pilgrim	Ft. Bragg, CA (707) 743-9973 (707) 795-8163	"A" O/CP; "B" N iambrewing@aol.com wolves1961@sbcglobal.net
Sept. 4 (Tentative)	Harvey Bear Ranch Chere Barger Sec: Kathi Bruns	San Martin, CA (408) 683-2247 (408) 683-5695	"B" O/N/CP kvbruns@aol.com



The Bald Mountain Butt Buster 2010 by Deb Moore

Trail riding in Alaska is a wonderful thing. We have hills, sun and even some rain. We don't get many chances to compete in our event of choice. But we enjoy the opportunity for the one time a year we do get. We love learning how we can do better at trail riding our horses. Sometimes the judges from "Outside" (anywhere outside of Alaska) tell us our horses aren't in as good of shape as horses in other states, but we do our best. Not many of us are quite as taken with trail riding at -20 degrees with 3 hours of sunlight as we are at +60 degrees with 20 hours of sunshine. We do love to ride and thanks every year to some wonderful volunteers, we get to compete in one NATRC Competitive Trail Ride.

This year, our ride was called "The Bald Mountain Butt Buster" or BMBB. From most of the riders' point of view, it was a total success and a blast. Sure, there were some issues. It turned out to be one of the LARGEST competitive trail rides in the WHOLE USA. According to the judges, the turn-outs for CTR's in the lower 48 haven't been that great this year, probably due to the economy. But we almost DOU-

BLED our normal turn out!!! This caused some small problems in the beginning but the management team did a wonderful job and kept the ride going.

It all started on Friday for us, packing and washing horses in the rain and getting everything loaded. Normally I only have one horse to worry about. But this year, I invited 3 juniors (two 12 year olds and one 14 year old) to ride with me in the Open Division, plus two adult first timers that I suggested do the one day Novice ride. When we finally got everything loaded, we had a regular caravan, all heading to the CTR site to get camp set up and get the horses checked in.

Check in went pretty smooth. Not surprisingly, the first time horses and their riders were all a bit excited and nervous and had trouble maintaining their gaits, be it a pace, trot, or the single foot, but we all got through it. I had a lot of people that I didn't know asking me questions, and I was more than willing to help them get through it all. I love it when people are successful and are happy with their horses. So my own "girls," who had been working with me all year or

at least all summer, were kind of on their own as I tried to help others do just a little better. It is a nice feeling to be recognized as somebody who is willing and able to help.

At the ride briefing Friday night, there were lots of questions, both from all my riders and others. This briefing didn't get over with until close to 11 pm. Makes for a long day, but who cares, it's only one weekend a month. In Alaska, folks do these long days all the time in the summer, for there is just too much to do. We have all winter to sleep!!!

Saturday morning started at 5 am for us. We got our horses fed, cleaned, had breakfast ourselves and were ready for our 8 am ride start. With all of our watches changed over to ride times, we were very much surprised when we went up at 8 am to discover we had missed our departure time by a few minutes. We never heard any announcements!!! This just meant we got a late start on the ride. Not that bad except it kind of set the tone for the whole day. "Not that bad but not the best it could have been."

Not to be deterred by a little bad luck at the beginning, the three girls and I got our maps out and set off across the hay field. The first obstacle, though not a judged one, was a cow pasture. One of my horses I know is terrified of cows, but she actually did okay. We passed one horse who was terrified while its buddy was standing past the cows waiting. Probably having that calm horse standing past the cows helped us, for all of our horses walked past very well. Of course all the cows had to run over to the fence and check out the horses, like they had never seen horses, even though a couple live with them. All part of an interesting ride. Moose on the trail might be okay, or even bears, but COWS are just SCARY! Within 15 minutes of passing the cows, we had made a wrong turn and ended back at ride camp. Here we were, thinking we had mastered reading the simple maps, but we turned right instead of left. We were on the afternoon return trail. When we ended up back in camp, we figured it out and got back on track. But this put us about 20 minutes behind.

Next, the trail had us climbing Bald Mountain, and of course there was a P&R at the top. Now, it was very hot and the climb was long. We actually don't get many days out of the 60's and most of our terrain where we condition is flatter or roll-



Photo by Kaylene Johnson

Deb and her girls cross the Little Susitna River

ing hills, but not steady climbing for 5 or 10 miles. This day was absolutely beautiful, in the 70's, sunny and a wonderful day except for climbing mountains. One of my young rider's horses didn't recover as well as normal, and we got a 10 minute hold due to a slightly too high heart rate. Now I know the other three of us didn't have to wait, but I don't leave a team member, especially a 12-year-old. Alaska is wild country, and it's better to stick together. There are grizzlies and mean mother moose where we were riding, and I would never leave a team member. So we waited, offered water and kept our fingers crossed. Cricket, the horse, did recover, and we moved on down the

*“At one point,
we chased a
moose down
the trail . . .”*

trail. The rest of the morning went fine with our discovering that all the riders in the Open division had gotten lost somewhere, and we were actually ahead of them instead of behind them all!

After lunch we managed to get confused again due to flagging and our ability to read a map not being as good as it could have been. I was fairly sure from the previous night's briefing that we were to go left out of camp. But I really wanted the girls to use their maps and discover this too. So I took a few extra minutes to get everybody on the same spot on the map and going in the right direction. By mid-afternoon, you could tell we were getting tired when I told the girls I couldn't hear them very good because the wind was in my eyes!!!! We all started laughing at that one. We might have been getting tired but our sense of adventure and good humor never deserted us.

During Saturday, we had several river crossings, other obstacles like hill climbing, and everything went great! Our only disappointment was that we came in almost 30 minutes late and were afraid we would be disqualified. This would have prevented us from riding Sunday, which we really wanted to do. The other sad thing was my

horse's back was really sore. I'd been trying different saddles all summer, but didn't really find one that worked for my horse. My horse Monet did really good all day, and it's sad to know I made her really sore.

The really wonderful part was the Vet judge came to my trailer, helped me examine Monet, and suggested I go with a synthetic saddle for Sunday to help distribute the weight differently. With the help of a different saddle and some wedges placed in good places, I thought Monet would be OK to ride the next day. Saturday was another long Alaska day with our not getting to bed until well after midnight. But it was still light, so who cared.

Sunday we were up at 5 am again. The girls were ready faster than on Saturday. They were doing great for so little sleep. I pretty much left them on their own since I had to take Monet up to see the Vet judge to ensure she was OK for the day. Her back was still sore, but she moved out willingly for the vet and continued to do so all day. We did worry a little all day because of coming in so late on Saturday. But since nobody told us we couldn't ride, we just kept on going. This day proved to be an exceptional day. We never got lost, our horses were more willing to move out, and it was raining just a little. Most people hate riding in the rain. But we actually enjoyed it, especially at first, for it helped keep the horses cool. At one point, we chased a moose down the trail, but it kept moving away from us and did not really slow us down. Sometimes moose scare horses, but Monet just kept her eyes on it until it disappeared into the woods. How they can disappear so completely is beyond me, but they do.

We had no problems at the P&R's, and things went well. For Sunday we had figured out a little plan to help our horses. Since we were riding in a group of four (three juniors and myself), I always had to go first through the obstacles. My horse was willing, and I could show the girls how I thought it should be done at least. Remember this was the girls' first ride ever, and we were all riding Open. We did a back-around in a figure 8, side passed to pick up a ribbon and place it on a tree, entered a muddy river bank and climbed out a steep bank on the far side, went through a gate and probably a few others that I can't remember. Monet did everything I asked absolutely perfect. Even the vet judge commented that I had a wonderful horse. Cricket did all the stuff asked pretty well, and the other two tried. What

more could you ask? They had only been training for the CTR for about 5 weeks, and I was impressed with their results. Young horses and young riders, all coming together to make successful teams.

We came in Sunday right on our target time. Everybody was proud of their horses. I don't think you could have purchased any of our horses for any amount of money that day. Monet didn't place as high this year due to the sore back, but I thought she actually did better than last year! I placed 2nd in Open Lightweight Horsemanship, so I know I can still improve my riding ability. My three girls all tied for First in Open Junior. The judges said that was a first for them that all three riders had exactly the same points. So they had to use tie breakers to determine who got what place. Remember I said we had come in late on Saturday? Well those penalty points were part of the tie breakers for the girls.

My two Novice riders had a wonderful time but had to ride for completion only due to coming in too late. So they didn't get to place. Their points, however, were very high. Each of their horses had slightly different problems, so they just decided not to worry so much about the time and have fun. I think they did. They were both glowing on Monday! My girls, on the other hand, were SLEEPING all day on Monday! We are all ready to do it again. Wish we didn't have to wait a whole year!!! Fairbanks 2011, same weekend in July. Hope to see you there!

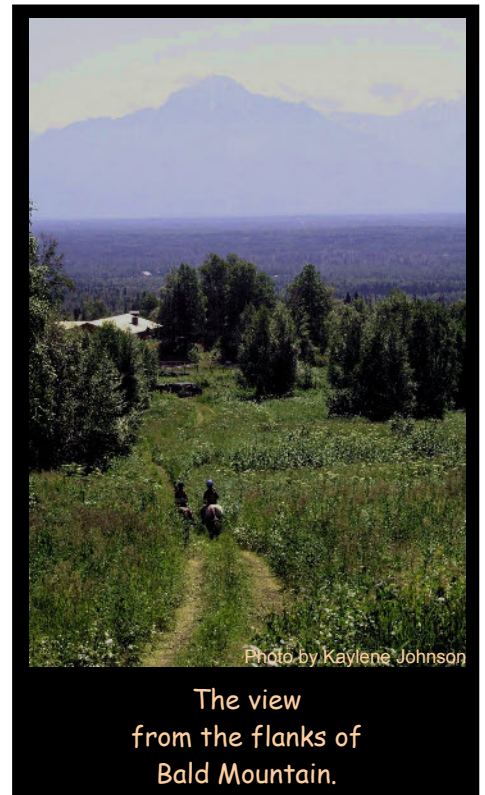


Photo by Kaylene Johnson

The view
from the flanks of
Bald Mountain.

NORTH AMERICAN TRAIL RIDE CONFERENCE

PO Box 224, Sedalia, CO 80135, 303-688-1677, Fax 303-688-3025
www.natrc.org, natrc@natrc.org



MEMBERSHIP FORM - RENEW, JOIN OR PURCHASE ITEMS ONLINE AT WWW.NATRC.ORG

Memberships run from January 1-December 31. We offer six membership plans: four Regular, two Platinum. The Platinum plans receive all the benefits of the Regular plans plus personal excess liability coverage with a \$1,000,000 policy limit.

CHECK PLAN DESIRED - JOIN/RENEW BEFORE THE MARCH 1, 2011 MEMBERSHIP FEE INCREASE

REGULAR MEMBERSHIP: All NATRC memberships include: subscription to Hoof Print, eligibility to compete for NATRC annual high score awards and championships, rider and horse mileage awards, reduced ride entry fees, sponsor discounts and automatic membership in the region where you reside.

	<u>Before 3/1</u>	<u>After</u>	
<input type="checkbox"/> FAMILY.....	\$60.00 /yr	\$90 /yr	Household of 1 or 2 adults and children under the age of 18 as of Jan 1 (2 votes)
<input type="checkbox"/> SINGLE ADULT..	\$50.00 /yr	\$60 /yr	Single adult member (1 vote)
<input type="checkbox"/> ASSOCIATE.....	\$50.00 /yr	\$50 /yr	Equine-related groups or businesses only (no vote)
<input type="checkbox"/> JUNIOR.....	\$35.00 /yr	\$40 /yr	Single Junior member under age 18 (no vote)

PLATINUM MEMBERSHIP: Platinum members receive insurance benefits thorough Association Resource Group-ARG. Platinum members receive personal excess liability coverage with a \$1,000,000 policy limit. Coverage is for claims brought against members of NATRC (Platinum) arising from the use and /or ownership of a horse and for horse-related accidents involving third party bodily injury or property damage. Coverage will apply when engaged in any horse related activity, and coverage is in excess of any existing valid and collectible insurance. There is no deductible. Professional Liability is not included. Business exposures are excluded.

<input type="checkbox"/> FAMILY.....	\$100.00 /yr	\$130.00 /yr	Household of 1 or 2 adults and children under the age of 18 as of Jan 1 (2 votes)
<input type="checkbox"/> SINGLE ADULT..	\$70.00 /yr	\$80.00 /yr	Single adult member (1 vote)

LIFE MEMBER PLATINUM UPGRADE: _____ \$20 Single; _____ \$40 Family

HOOF PRINT SUBSCRIPTION ONLY: _____ \$18.00 per year US or _____ \$23 foreign

NATRC Specialties (Optional)

<input type="checkbox"/> Rule Book.....	\$5.00	<input type="checkbox"/> Patch (inc. w/new membership).....	\$5.00
(or download for free from our website, www.NATRC.org)		<input type="checkbox"/> 10" Round Sticker with NATRC Logo.....	\$5.00
<input type="checkbox"/> NATRC Introduction DVD.....	\$8.95	<input type="checkbox"/> 4" Round Sticker with NATRC Logo.....	\$3.00

\$ enclosed _____ Colorado residents please add 2.9%

WOULD YOU LIKE TO RECEIVE *HOOF PRINT* ELECTRONICALLY? Yes _____ No _____
(If yes, be sure to fill in email address below. If left blank, Hoof Print will be sent electronically.)

Please list first and last names, especially those with different last names, of all competing family members.

Name(s) _____

Street _____ City _____

State, Zip _____ Phone (____) _____

Email: _____ Birthdates of Junior(s) _____

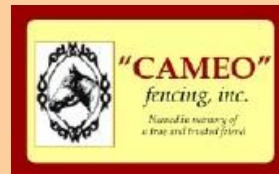
If you are a new member, can you share with us how you found out about NATRC?

If you are a new member, is there a current NATRC member that helped in your decision to join NATRC? If so, please list them:

If you are a new member, would you like to receive a printed Rule Book? Yes _____ No _____

*** Mail completed form and check to : NATRC, PO Box 224, Sedalia, CO 80135 ***

SLYPNERGEAR.COM
Your Complete Source for the Trail Horse.



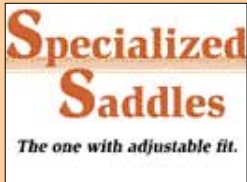
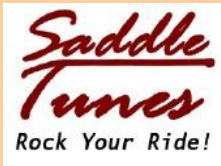
Chadbourne



Farm



**Please
Support
These
NATRC
National
Sponsors!**



The Leadline

Phil Young
674 LaPorte Rd
Quincy, CA 95971

